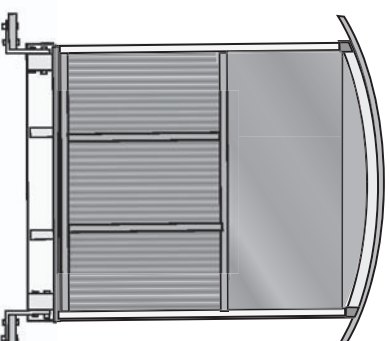


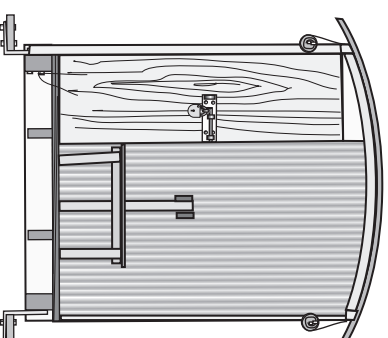
A



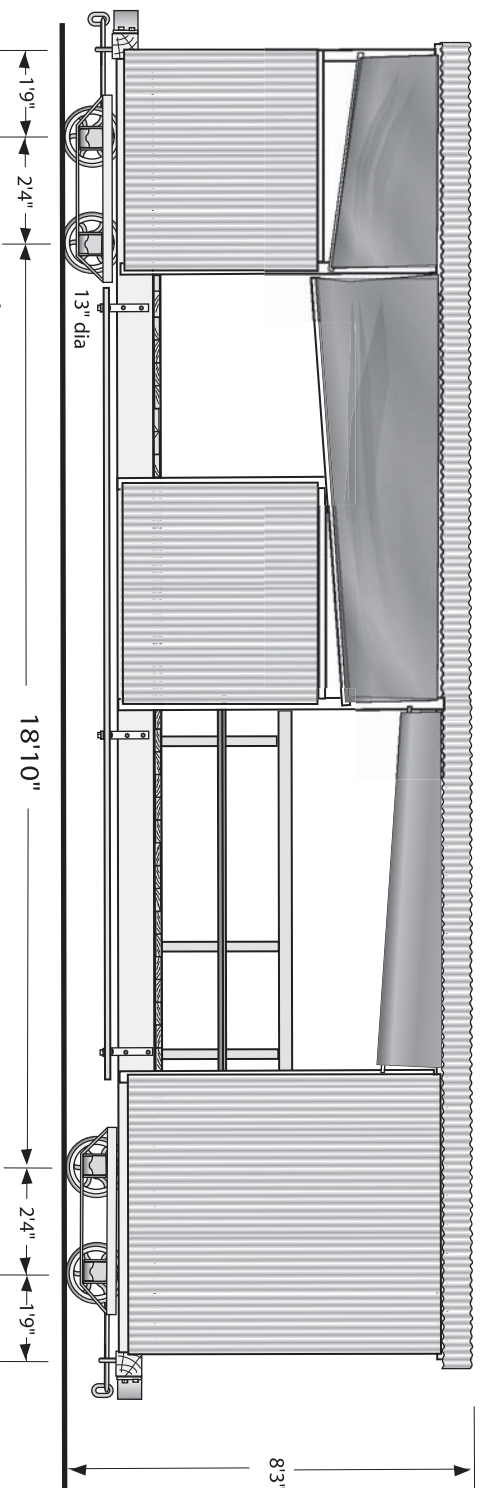
B



A - A

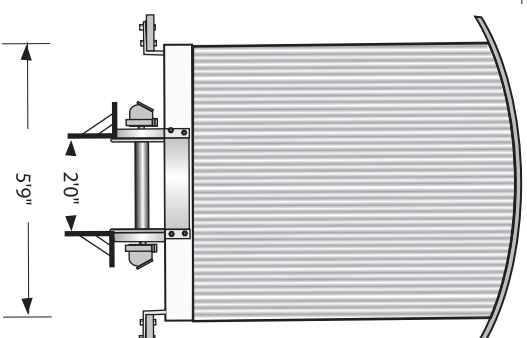


B - B



A

B



MORETON SUGAR MILL (Nambour)

LONG WORK CAR

Measured August 1962

NOTES:- Galvanised iron sides, ends & roof

Center knife board seats

Door to storage compartment ply

Sides sometimes covered by

taraulins in bad weather

Scale 1/4 inch = 1foot 1 : 48

drawn by Jim Fainges 2005
digitised April 2006